



eocco

EASTERN OREGON
COORDINATED CARE
ORGANIZATION





eooco

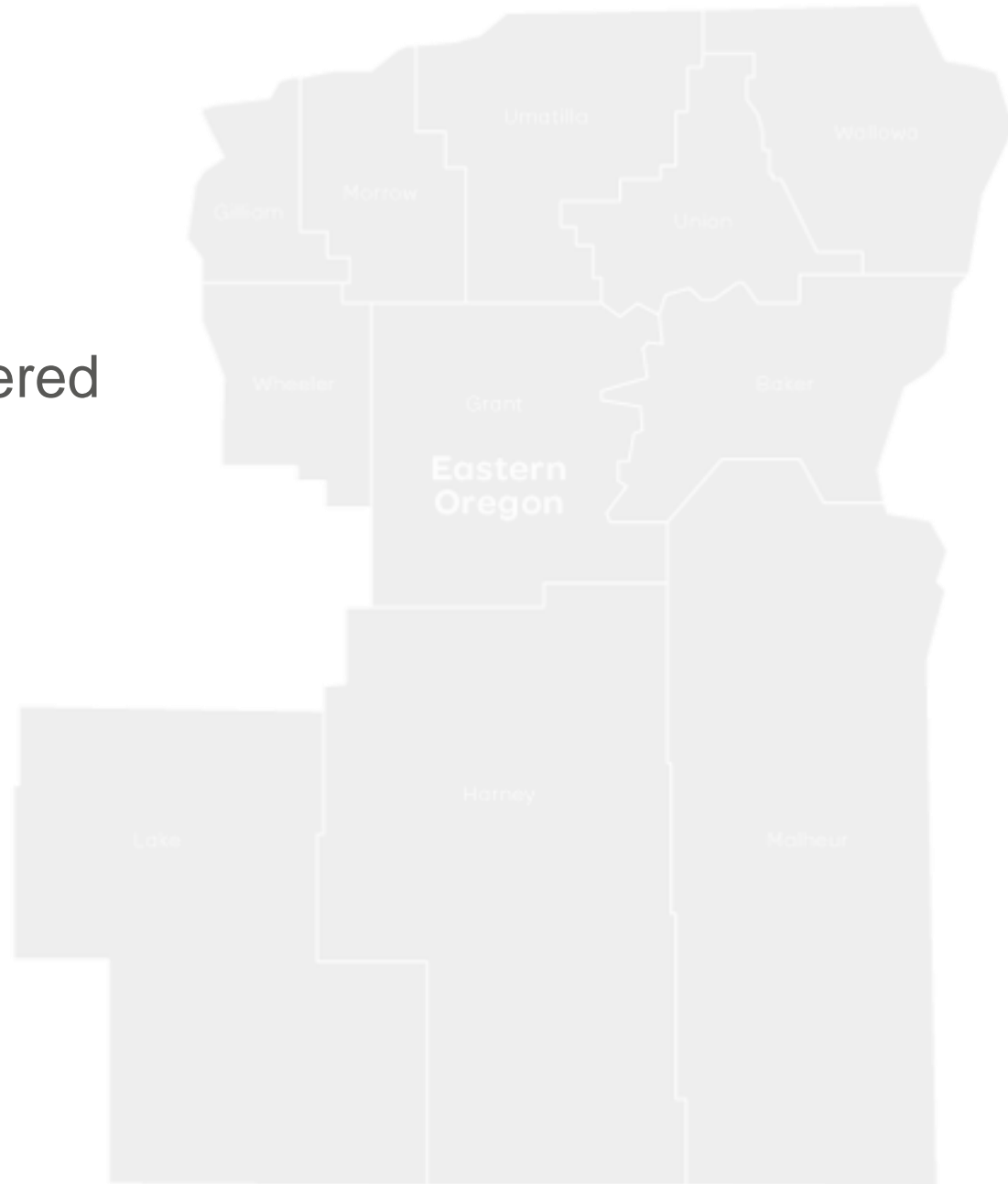
EASTERN OREGON
COORDINATED CARE
ORGANIZATION

EOCCO Community Health Worker Program



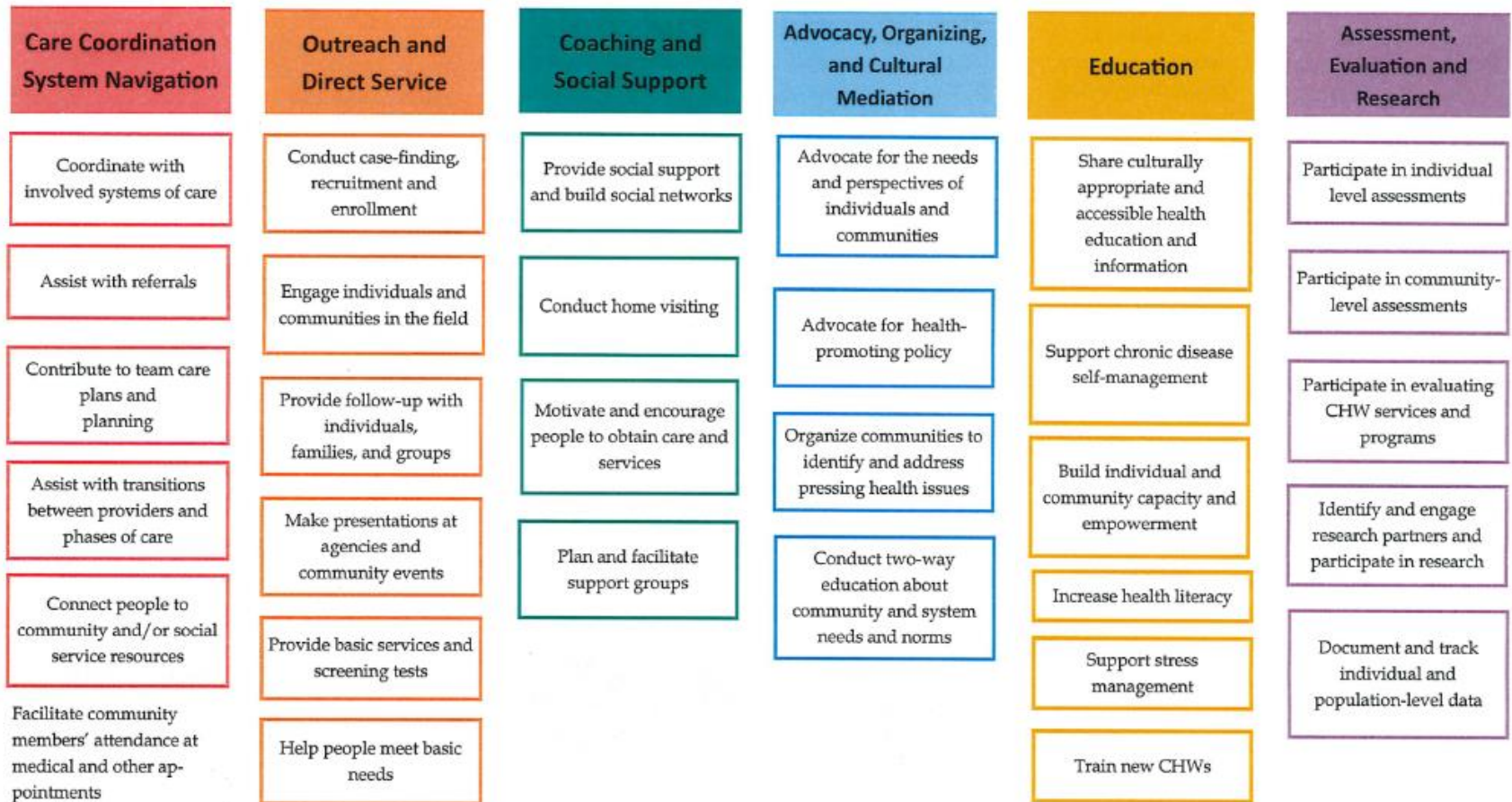
Topics

- Scope of practice
- Covered and non-covered services
- Billing information
- Documentation requirements
- Life of a claim
- Resources



Scope of Practice

Traditional Health Worker Commission: Community Health Worker Scope of Practice (FINAL)



*Success of above roles are dependent on knowledge and skills gained in community membership and shared life experience. This list of not intended to be either prescriptive or all inclusive.

FINAL 01-25-16

Covered & Non-Covered Services

- Provide non-clinical support
- Help patients navigate the healthcare system
 - Arrange and Accompany to appointments
 - Explain Healthcare information
 - Provide support in compliance with an understanding of recommend treatments and medications
 - Assist with picking up prescribed items (medications, supplies, food, etc.)
 - Assist with connecting with new providers
 - Improve communication between providers and patients
 - Help locate and understand available community resources
- Does not cover social service such as enrollment assistance or case management

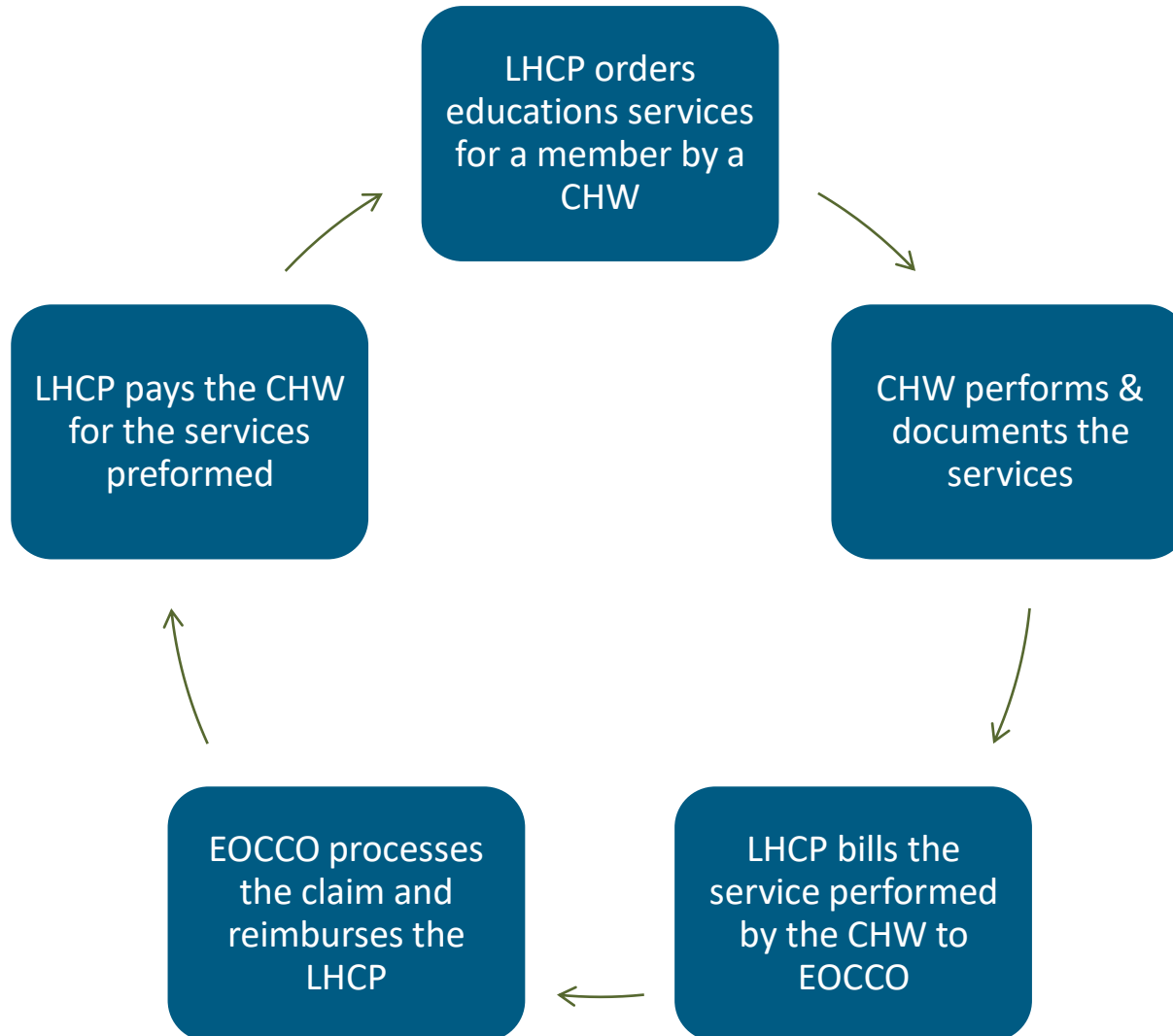
Billing Information

- CHWs must work and bill “under the supervision of a Licensed Health Care Professional (LHCP)”. When the CHW is the rendering provider, OHA will allow the code to pay
- Submit on a standard CMS-1500 or UB-04 billing form (as applicable to the billing provider/entity)
- Bill with one of the covered procedure codes outlined in our CHW policy
- Bill in 30-minute units
 - Limit 4 units per 24 hours
 - No more than 8 units per calendar month per recipient
- Corrected billings are accepted and encouraged if it wasn't billed correctly

Documentation Requirements

- An order for services signed by the licensed professional specifying the number of units ordered and whether group and/or individual service(s)
- Documentation of the date of service, start and end time for the service, whether the service was group or individual and if group, number of patients present, summary of the session's content, and the CHWs signature and printed name

Life of a Claim



Resources

- EOCCO's CHW policy:
www.oregon.gov/oha/OEI/Documents/EOCCO-CHW-Policy.pdf
- Scope of THW work:
www.oregon.gov/oha/OEI/Documents/Traditional%20Health%20Worker%20Scope%20of%20Practice.pdf
- Oregon Medicaid Fee-For-Service reimbursement for CHW guide
www.oregon.gov/oha/HSD/OHP/Tools/CHW_Billing%20Guide.pdf
- Oregon Medicaid Fee Schedule:
www.oregon.gov/oha/HSD/OHP/Pages/Fee-Schedule.aspx

Resources

- EOCCO's THW Liaison, Kathryn Hart:
Kathryn.Hart@modahealth.com
- Lead Medicaid Professional Relations Representative:
Noah.Pietz@modahealth.com



Questions?



eocco

EASTERN OREGON
COORDINATED CARE
ORGANIZATION